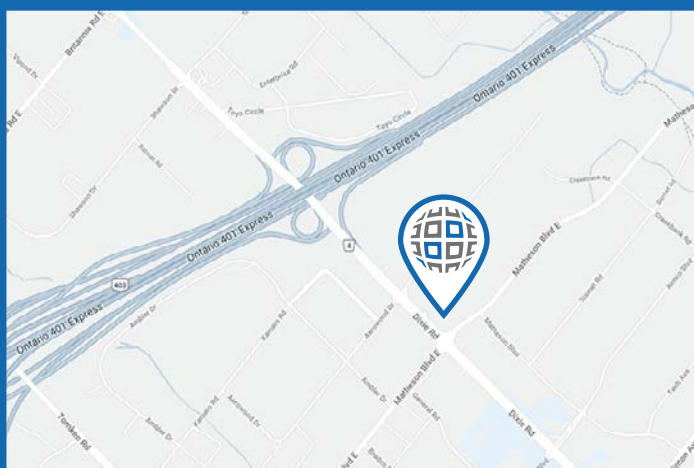


# 1515 Matheson Blvd East, Unit 217

Mississauga, ON



## Property Details

### Unit 217

- |                    |                             |
|--------------------|-----------------------------|
| Area, Square Feet: | • 1,91 SF                   |
| Unit Features:     | • Professional office space |
|                    | • Kitchenette               |
|                    | • Large windows             |

## Building Overview

- Right on the corner of Dixie and Matheson
- Great access to Highways and Transit
- Professionally designed Atrium with elevator
- Access-code public washrooms
- Free surface parking

## Contact Us

Tel: (416) 792-0438  
[www.BritanniaProperties.com](http://www.BritanniaProperties.com)

### Britannia Property Management

2700 Dufferin Street, Unit 71  
Toronto, ON M6B 4J3 Canada

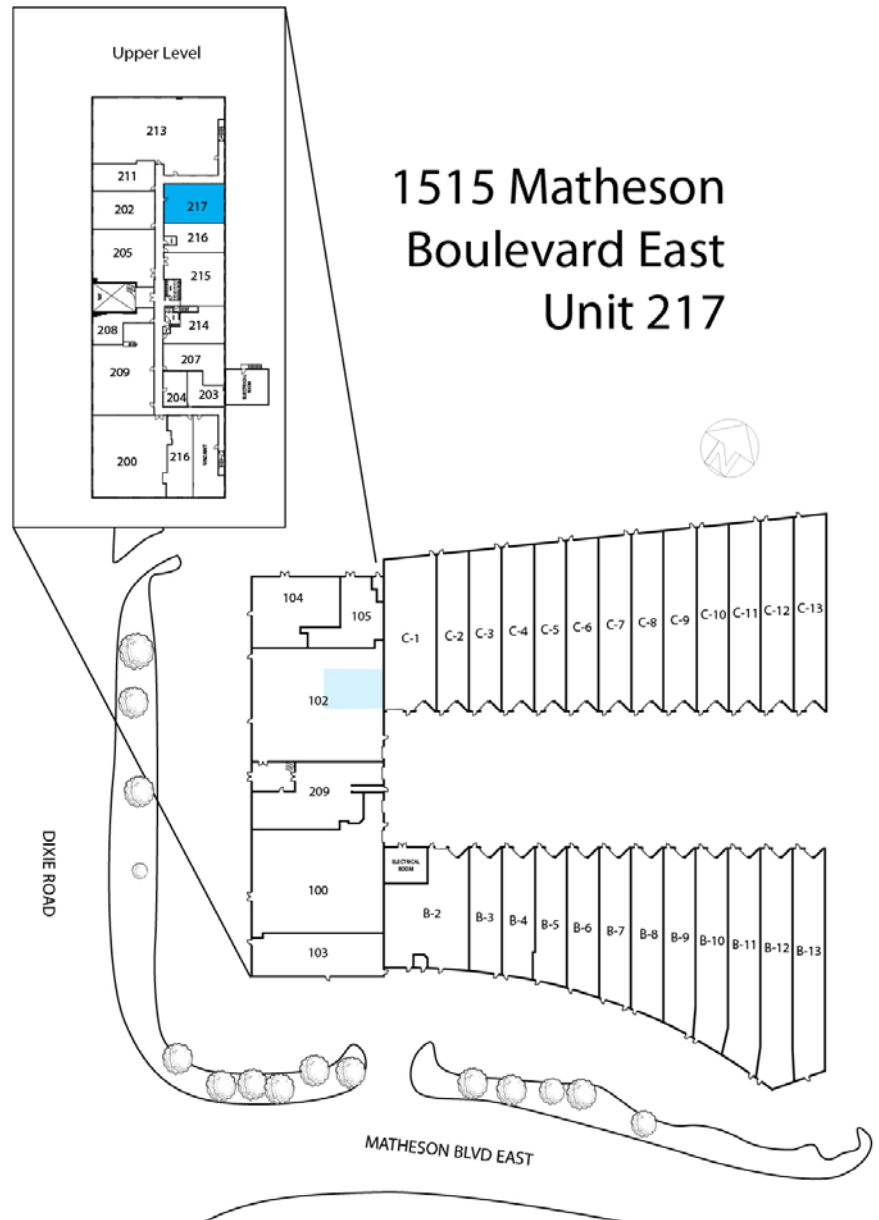
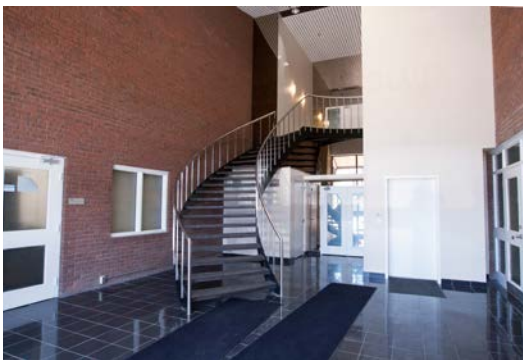


**BRITANNIA  
PROPERTIES**

# 1515 Matheson Blvd East, Unit 217

Mississauga, ON

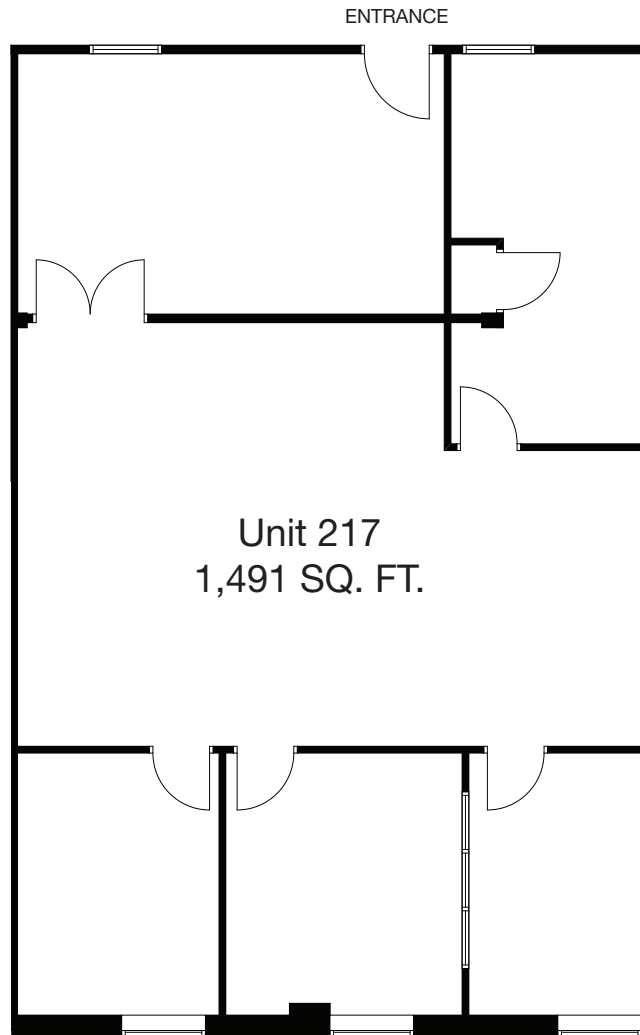
Unit Location within Building



# 1515 Matheson Blvd East, Unit 217

Mississauga, ON

Unit Floorplan



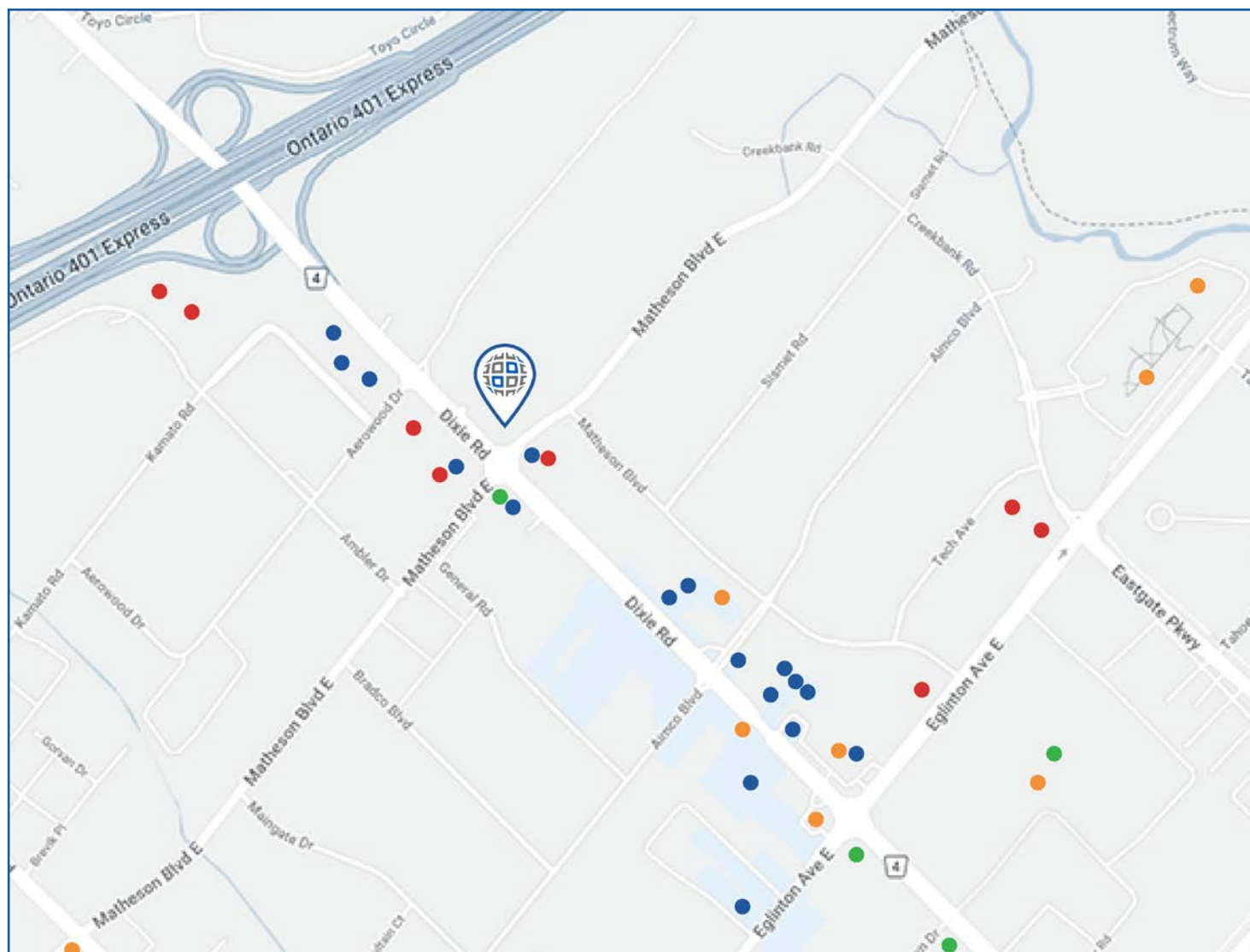
1515 MATHESON ROAD EAST  
UNIT 215



CITY OF MISSISSAUGA

# 1515 Matheson Blvd East, Unit 217

Mississauga, ON



## NEARBY AMENITIES

Less than 10  
Minutes to Pearson  
International Airport



DINING & RESTAURANTS



COFFEE SHOPS



BANKS & ATMs



ACCOMMODATIONS



# 1515 Matheson Blvd East, Unit 217

Mississauga, ON

## LOCAL TRANSIT SERVICE

**4** BUS ROUTES STOP RIGHT OUT FRONT

- 5** Dixie
- 185** Dixie Express
- 43** Matheson-Argentia
- 39** Britannia



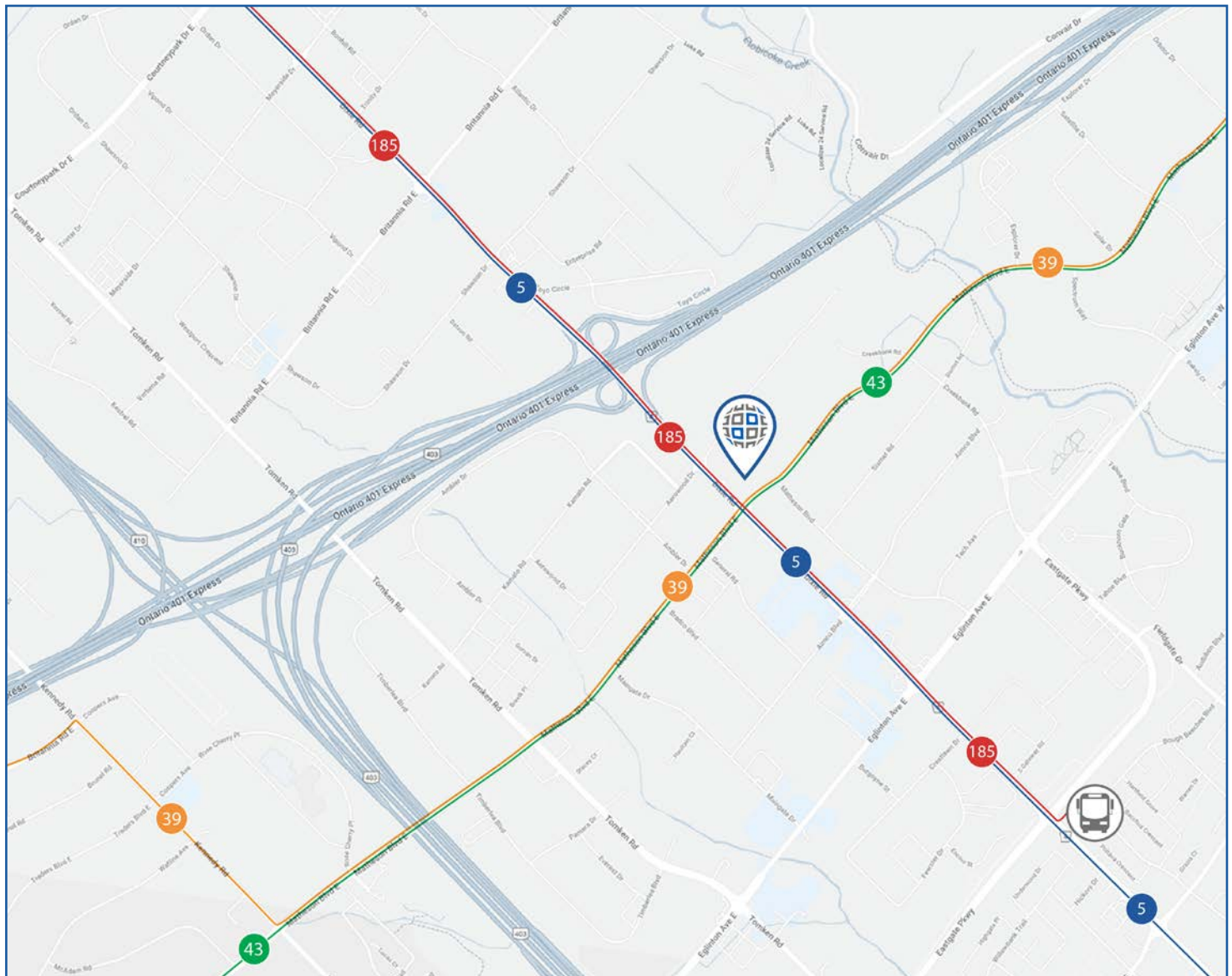
## VEHICLE ACCESS

**FREE** Surface Parking

**1 Minute** to Highway 401

**3 Minutes** to Highway 403

**5 Minutes** to Highway 427





BRITANNIA  
PROPERTIES

2700 Dufferin Street, Unit 71  
Toronto, ON M6B 4J3  
Tel: (416) 792-0438

[WWW.BRITANNIAPROPERTIES.COM](http://WWW.BRITANNIAPROPERTIES.COM)