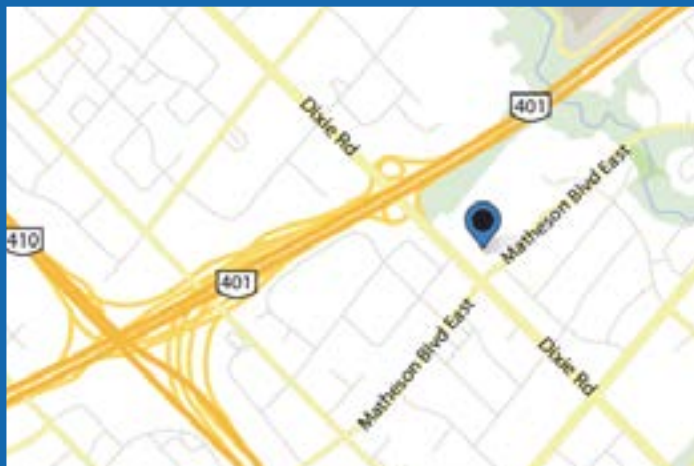


1515 Matheson Blvd East, Unit B-6

Mississauga, ON



Property Details

Unit B-6

Area, Square Feet:	2,597 SF
Clear Height:	14'
Power:	100 Amps/ 3-phase / 600 volts
Shipping Doors:	1 Dock-level door

Building Features & Comments

- Right on the corner of Dixie and Matheson
- Great access to Highways 401 and 410
- Retail Storefront with plenty of parking

Contact Us

Tel: (416) 792-0438
www.BritanniaProperties.com

Britannia Property Management

2700 Dufferin Street, Unit 71
Toronto, ON M6B 4J3 Canada

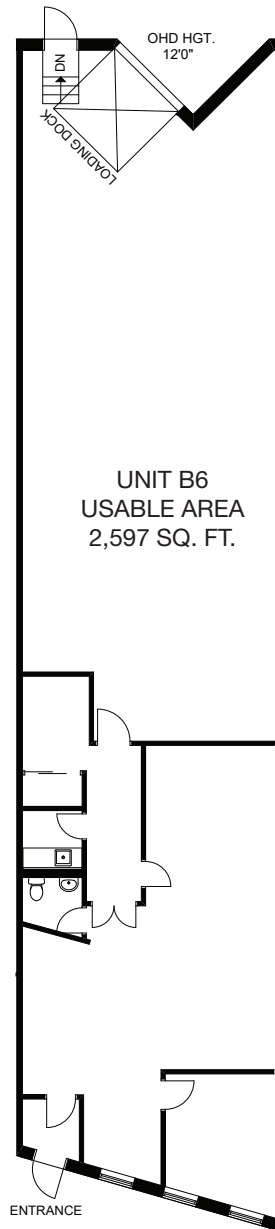


BRITANNIA
PROPERTY MANAGEMENT INC.

1515 Matheson Blvd East, Unit B-6

Mississauga, ON

Unit Floorplan



1515 MATHESON ROAD EAST
UNIT B6



1' 6' 12'
SCALE

CITY OF MISSISSAUGA



1515 Matheson Blvd East, Unit B-6

Mississauga, ON



Unit Location

