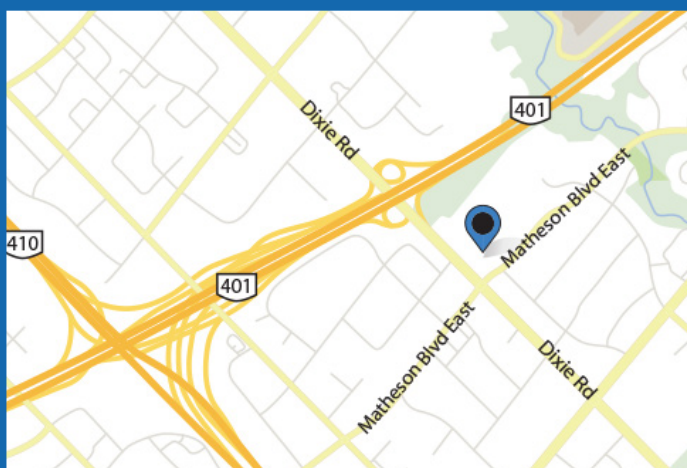


1515 Matheson Blvd East, Unit B-10

Mississauga, ON



Property Details

Unit B-10

Area, Square Feet:	3,592 SF
Clear Height:	16'
Power:	60 Amps/ 3-phase / 600 volts
Shipping Doors:	1 Drive-in Door

Building Features & Comments

- Right on the corner of Dixie and Matheson
- Street exposure facing onto Matheson
- Great access to Highways 401 and 410
- Approximately 50% office with warehouse in back
- Shipping door with drive-in ramp
- Plenty of parking right out front

Contact Us

Tel: (416) 792-0438
www.BritanniaProperties.com

Britannia Property Management

2700 Dufferin Street, Unit 71
Toronto, ON M6B 4J3 Canada

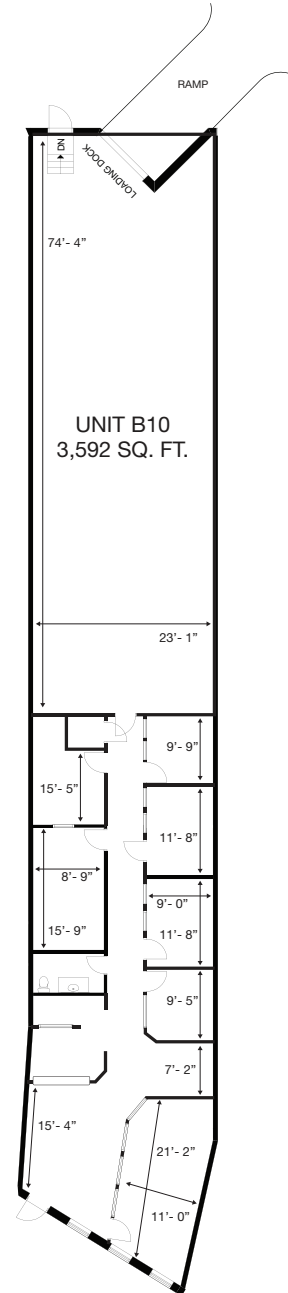


BRITANNIA
PROPERTY MANAGEMENT INC.

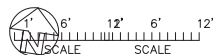
1515 Matheson Blvd East, Unit B-10

Mississauga, ON

Unit Floorplan



1515 MATHESON ROAD EAST
UNIT B-10

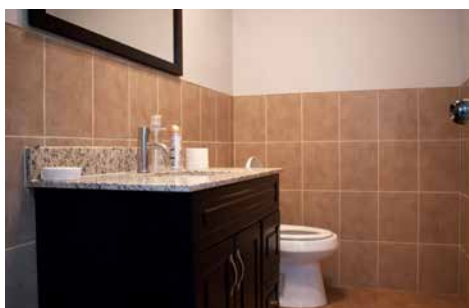
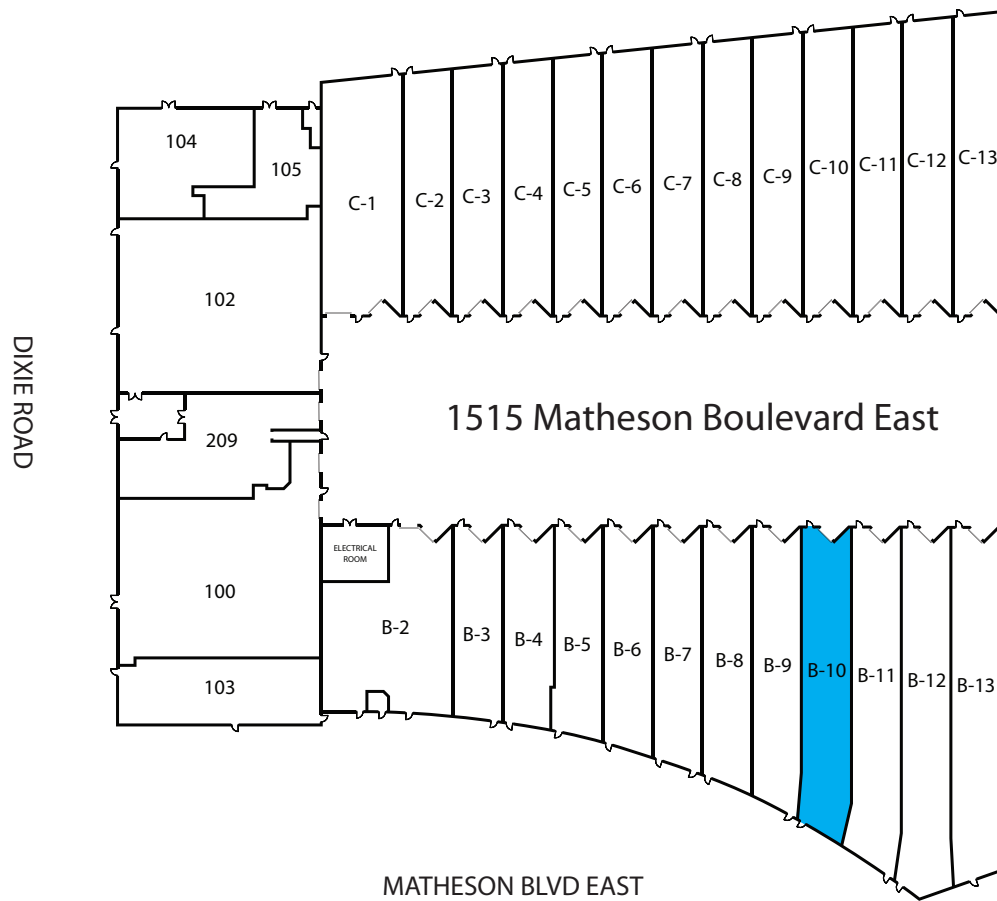


CITY OF MISSISSAUGA

1515 Matheson Blvd East, Unit B-10

Mississauga, ON

Unit Location





BRITANNIA
PROPERTIES

2700 Dufferin Street, Unit 71

Toronto, ON M6B 4J3

Tel: (416) 792-0438

WWW.BRITANNIAPROPERTIES.COM